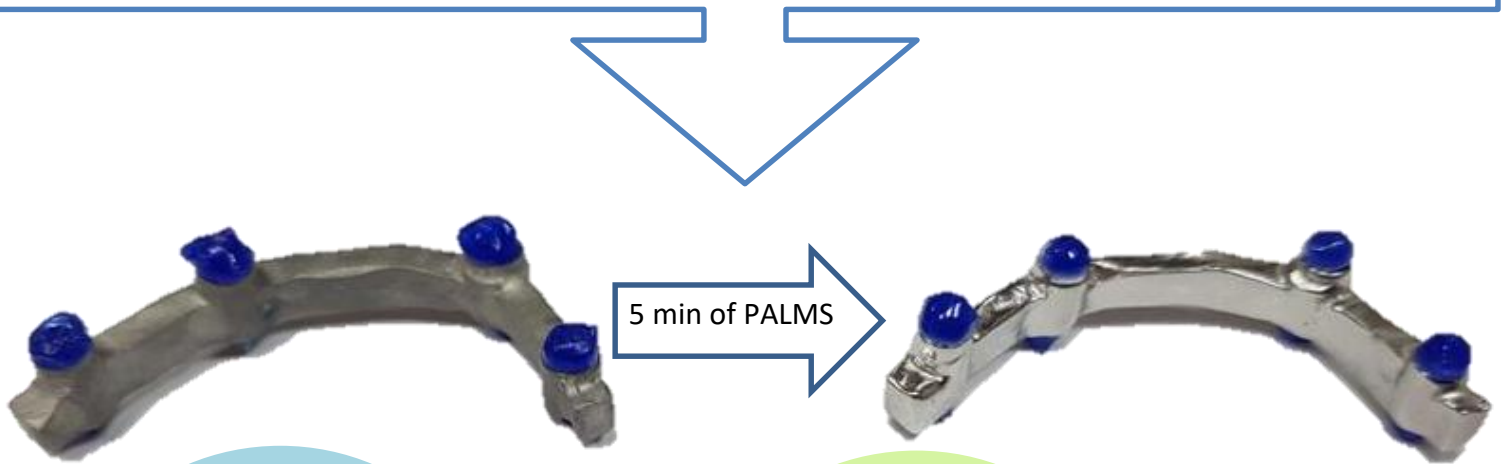


# RAPID AUTOMATED 'PALMS' POLISHING OF DENTAL BARS SAVES TIME AND MONEY

## PALMS - New, patented Electrolytic Plasma Polishing

- Polishing takes just 5 minutes!
- Geometry and edges are maintained
- Environmentally friendly electrolyte
- Massive savings compared to manual polishing and electro-polishing



### Metals Polished

- Cobalt chrome
- Titanium alloy
- Titanium
- Stainless steel
- (Aluminium, brass, copper & others)

### Compatible with

- Cast
- Machined
- ALM / 3D-printed
- Masking
- Improved work environment

### Advantages over electro-polishing

- 5 times faster
- Geometry maintained
- Edges maintained
- No toxic electrolyte
- More cost-effective

### Advantages over manual-polishing

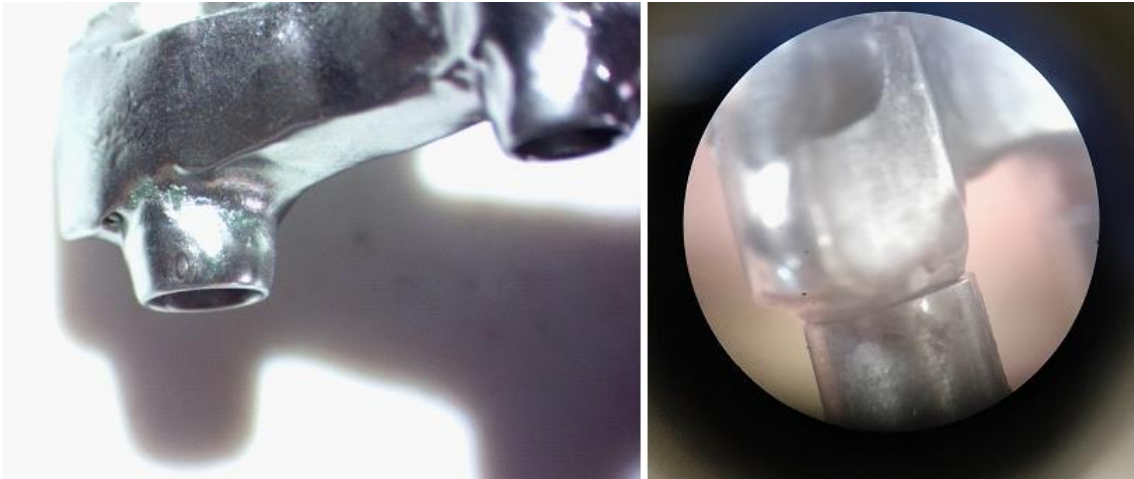
- 50 times faster
- Savings on labour
- Avoids long, dirty, tedious task
- Massive cost savings

*4 hours painstaking, dirty and uncomfortable manual polishing replaced by 5 minutes of environmentally friendly PALMS polishing!*



## Why masking?

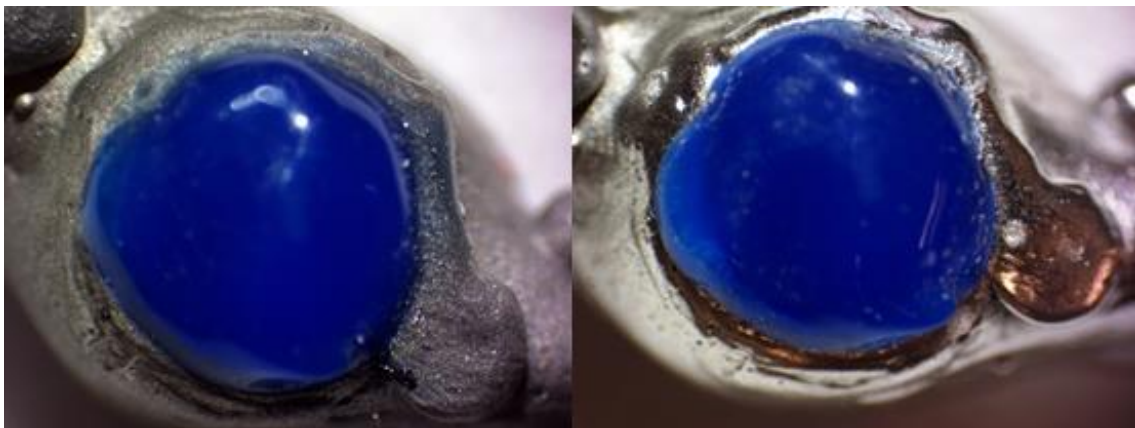
PALMS-processing model dental bars as a whole, while significantly improving the roughness and surface state, showed rounding of the coupling areas, as illustrated above. The photos taken under optical microscopy in particular (*right*) show typical rounding of edges from PALMS. Though significantly less rounding occurs with PALMS than electro-polishing it is nevertheless sufficient to cause small gaps and, just as critically, uneven coupling.



PALMS-processed CrCo prosthesis: the surface finish is satisfactory, but edge rounding on the coupling means crevices in the end application and higher risks of bacterial colonisation.

## Benefits of masking

Simple and fast to apply masking of these critical areas maintains geometry and edges while PALMS quickly polishes the bar.



Detail of masked area before (left) and after PALMS treatment: smoothing and glossiness is obtained. The mask itself, as well as the sample surface it protects, are preserved.